

How to create a Microsoft Exchange Server 2007 or 2010 SMTP Receive Connector

Use the following instructions to create a Microsoft Exchange SMTP Receive Connector for DocuFire Server to relay email messages.

1. Start the Exchange Management Console.
2. Browse to Microsoft Exchange > Server Configuration > Hub Transport.
3. Select the Hub Transport server through which you would like to allow another system to relay mail.
4. From the Actions pane, choose New Receive Connector.

Introduction

Assign a name such as DocuFire and leave the intended use as “Custom”.

New Receive Connector

Introduction
 New Connector
 Completion

Introduction
This wizard helps you create a new Receive connector on the selected server.

Name:

Select the intended use for this Receive connector:

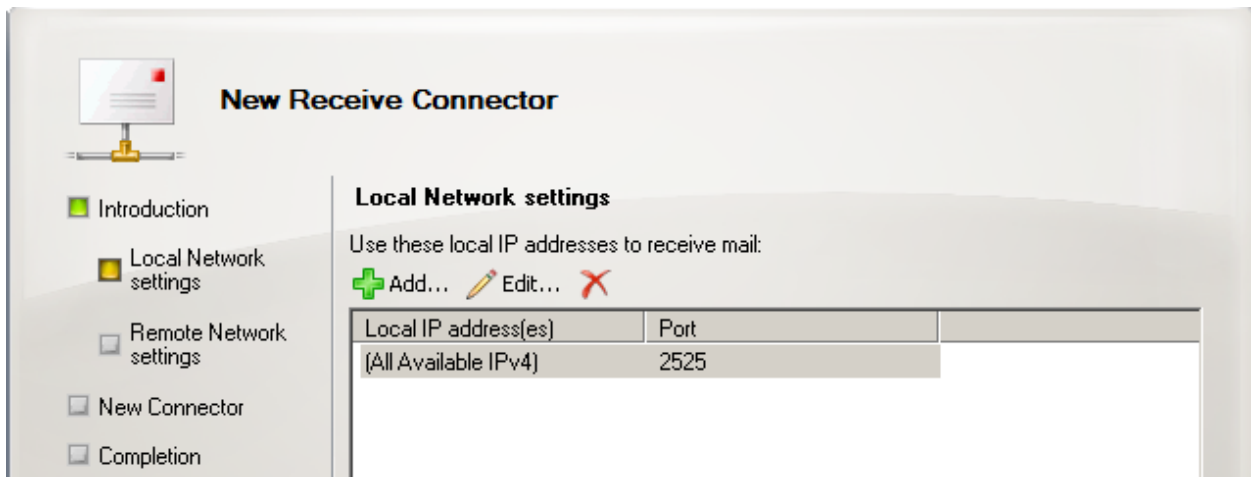
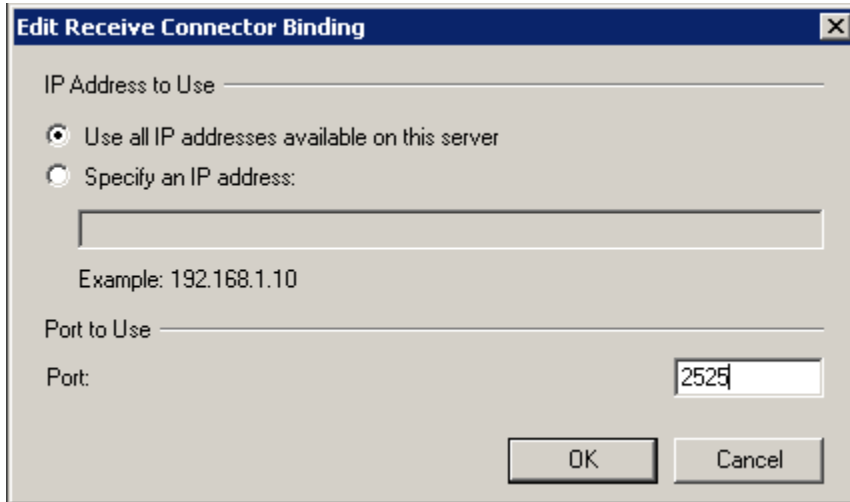
Description: Select this option to create a customized connector, which will be used to connect with systems that are not Exchange servers.

Click Next

Local Network Settings

Under the Local Network Settings you can set the IP address to receive mail on. We recommend you leave this as the Default (All Available IPv4). However we recommend changing the Port number to something other than 25 such as 2525.

Click Edit to open this window.

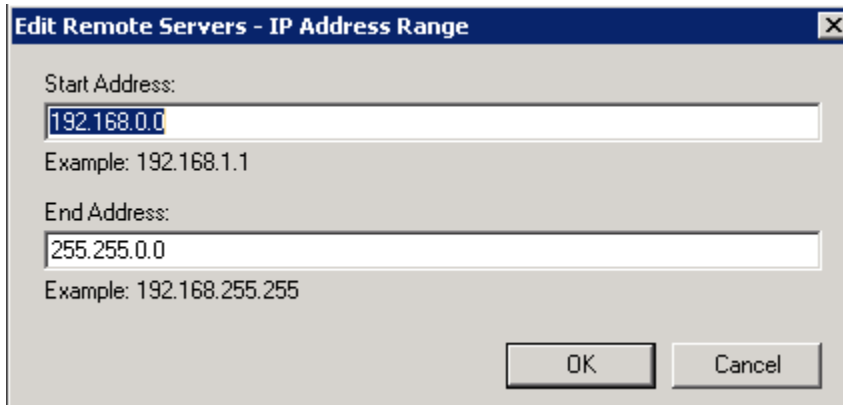


Click Next

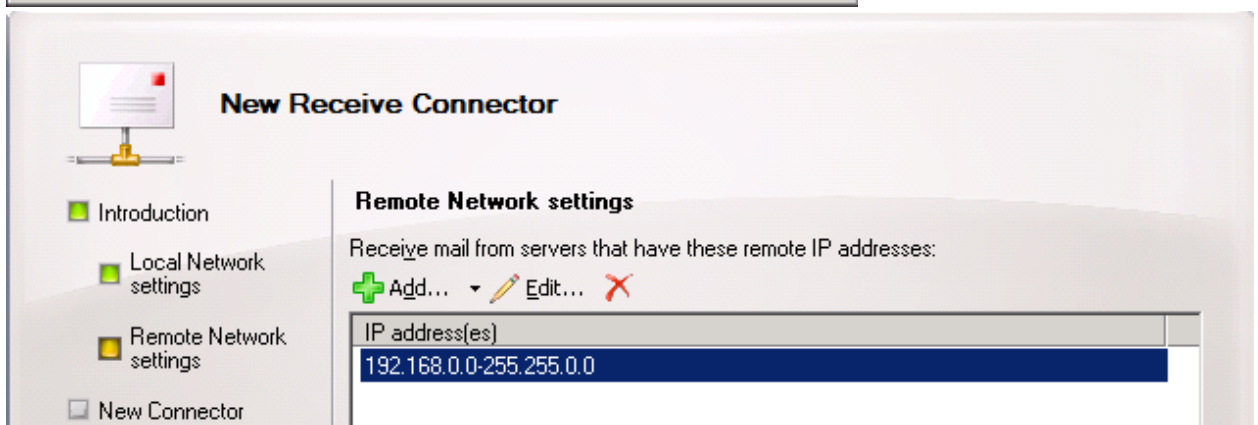
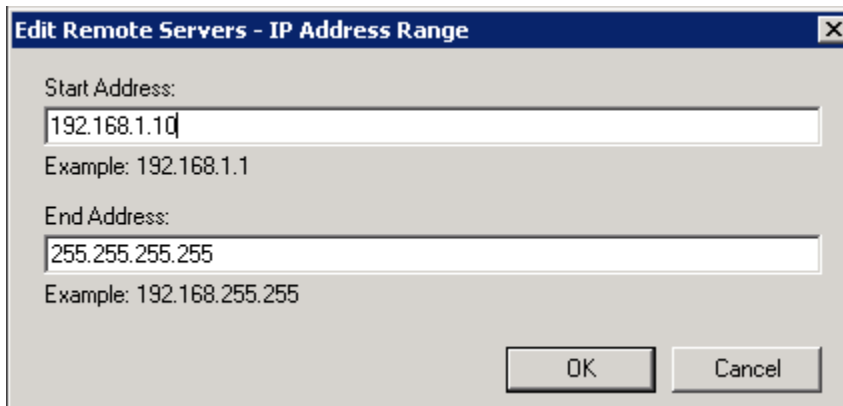
Remote Network Settings

This window allows you to limit the IP addresses of server that can relay mail using the Receive Connector. There are basic 3 general levels you can set control.

- a. The default is all IP address. If you exchange server is located within a DMZ (behind a firewall) it should be reasonably ok to leave this as all IP address, especially if you knowledge of network is limited as external servers on the internet will not be able to access internal IP addresses.
- b. Or set your internal IP block, example to allow the entire 192.168.x.x IP block to relay mail.



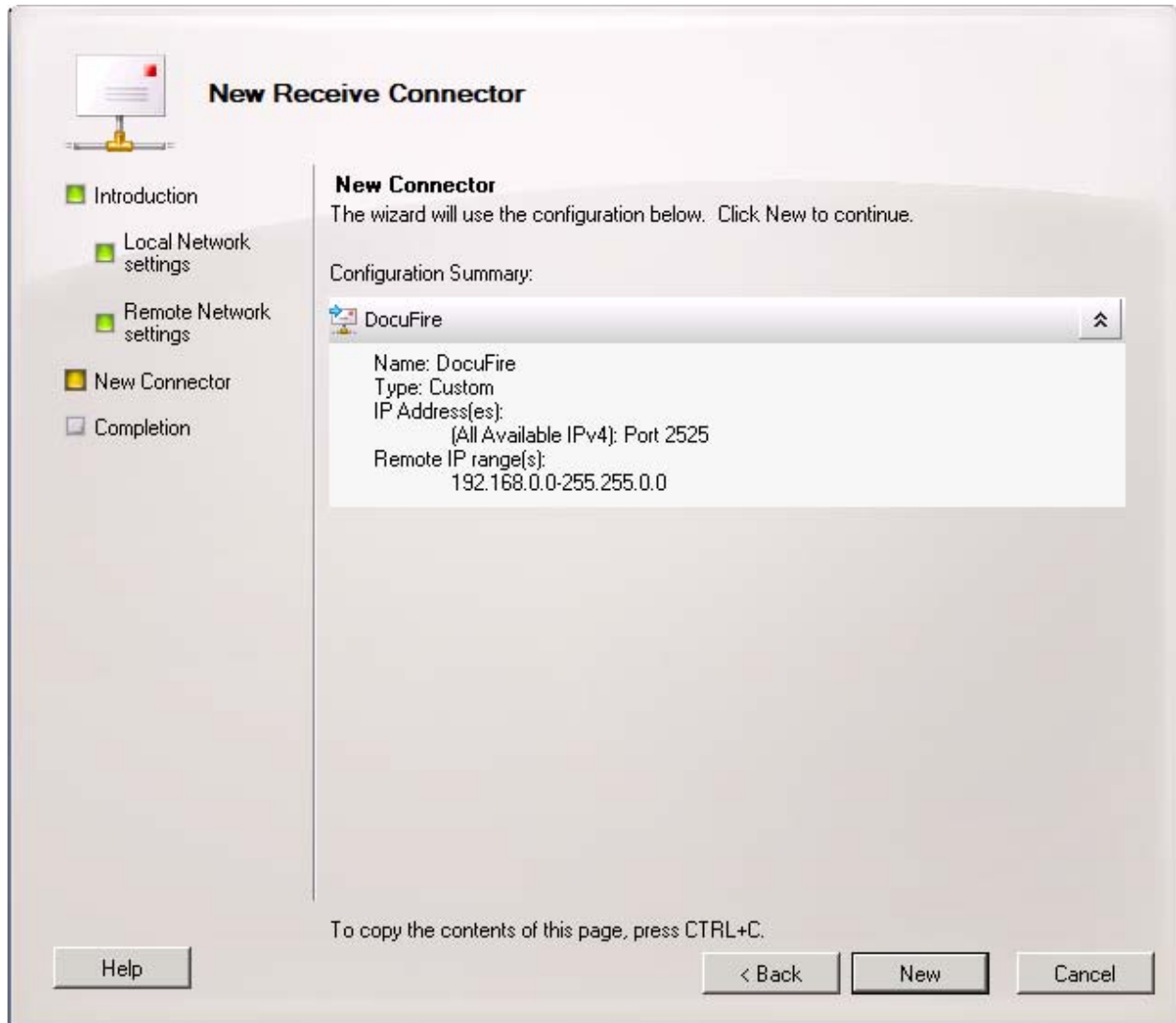
- c. The most secure method would be to set only the address of the DocuFire Server to be able to relay. The example below limits machine 192.168.1.10 to send mail.



Click Next

New Connector

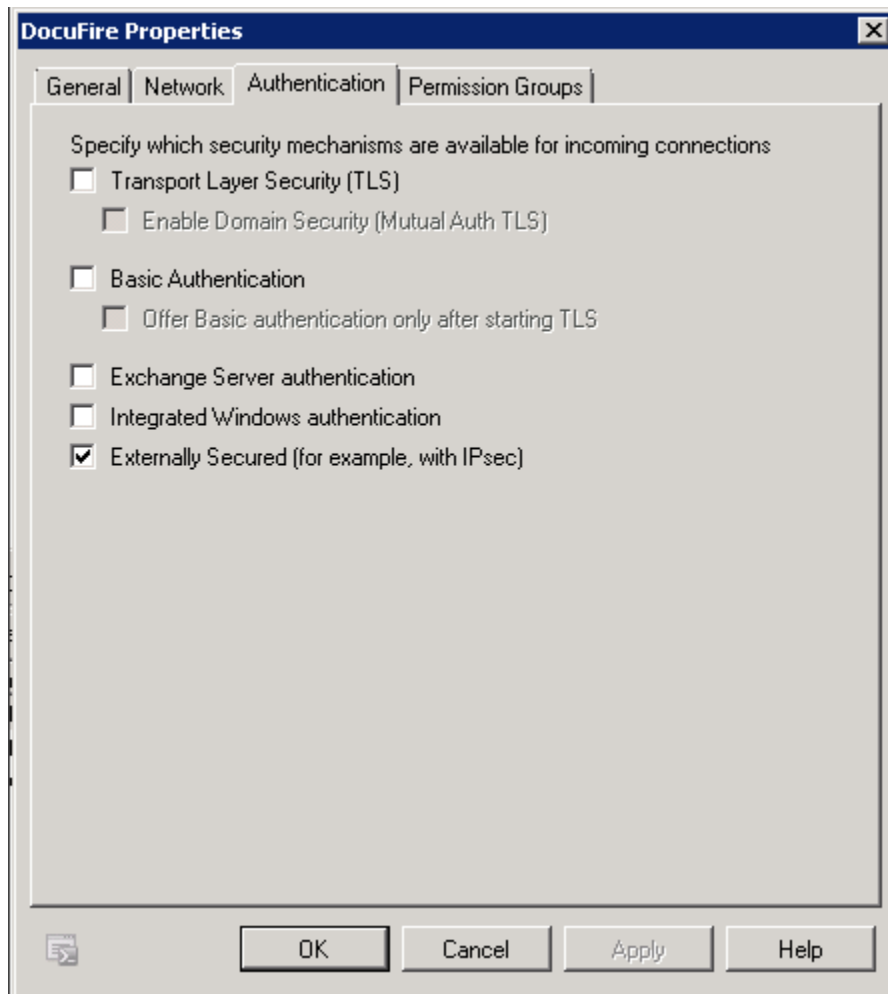
The final page will be a summary, click New to create the connector. Wait, there are MORE STEPS...



Click New to create

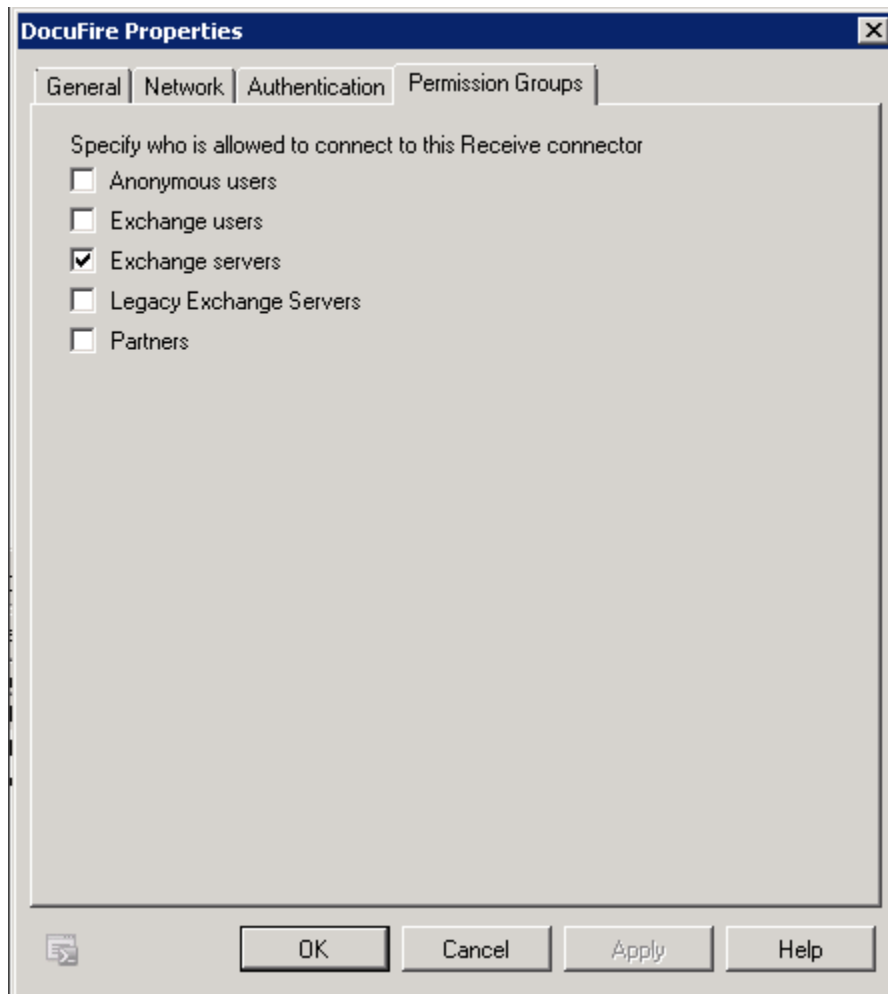
Authentication

Now access the Properties of the newly create Receive Connector and set the permissions as per below.



Permission Groups

Under the same Properties as before, access the Permission Groups tab and set the options as below.



Click OK to save the settings.

Now when you setup DocuFire you can use the Exchange server and don't forget to change the PORT to 2525 or whatever you chose to use.